

CARNAHAN · PROCTOR · CROSS, INC.
 CONSULTING ENGINEERS · SURVEYORS · PLANNERS
 6101 WEST ATLANTIC BOULEVARD, MARGATE, FLORIDA 33063
 PHONE: 954-972-3959 FAX: 954-972-4178

THOROUGHbred LAKE ESTATES PLAT 1

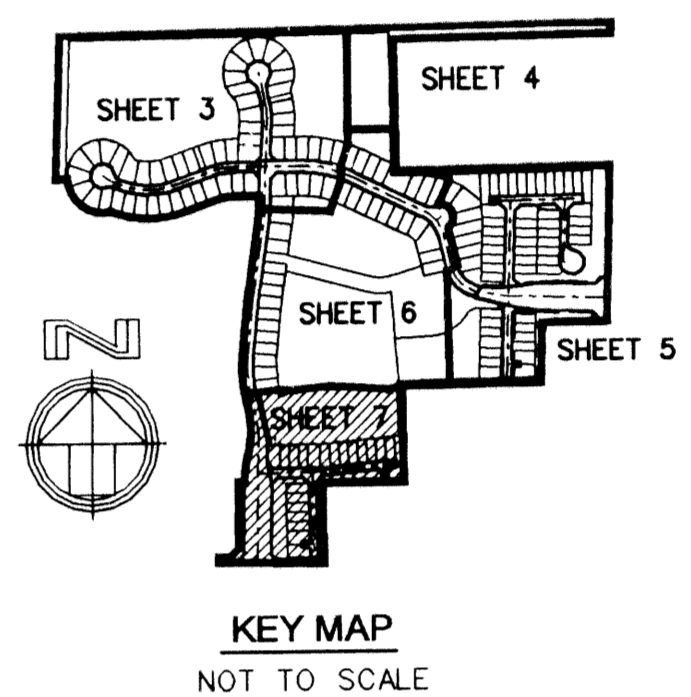
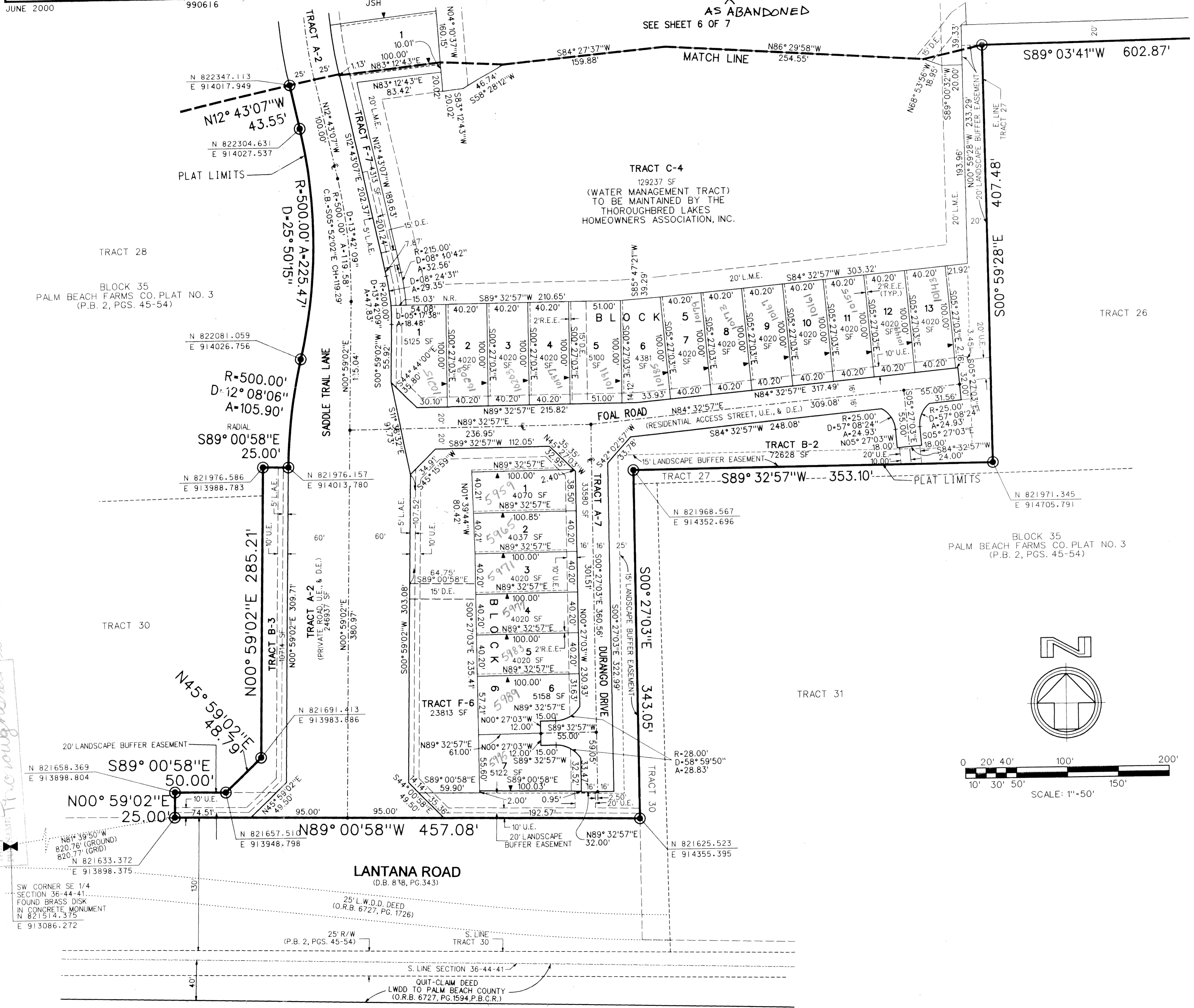
A REPLAT OF A PORTION OF BLOCK 35, "PALM BEACH FARMS CO. PLAT NO. 3" (P.B.2, PGS.45-54, P.B.C.R.) AND THE RIGHTS-OF-WAY INCLUDED THEREIN, IN SECTION 36, TOWNSHIP 44 SOUTH, RANGE 41 EAST, PALM BEACH COUNTY, FLORIDA

JUNE 2000

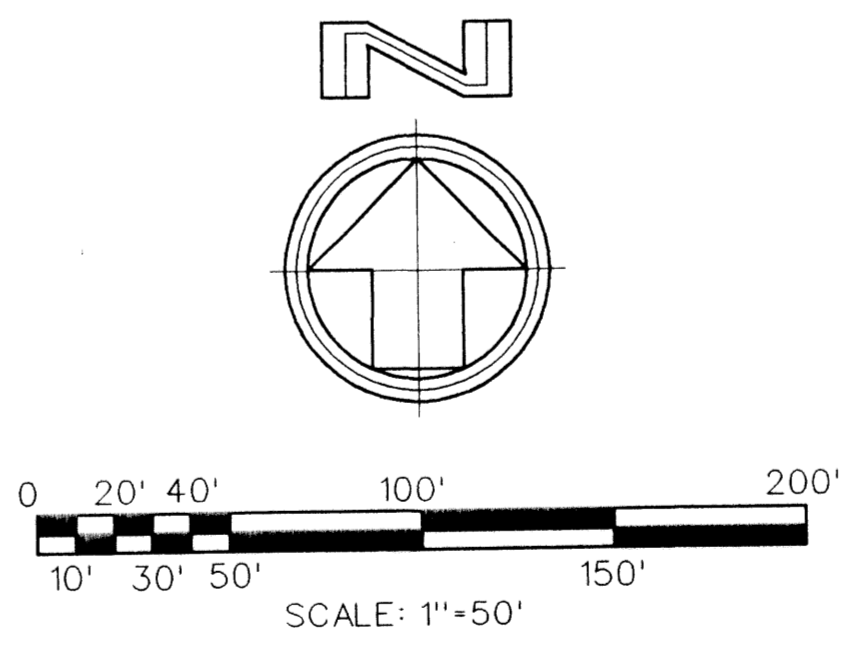
990616

JSH

AS ABANDONED
 SEE SHEET 6 OF 7



- LEGEND:**
- SET PERMANENT REFERENCE MONUMENT (P.R.M.) • LB2936 UNLESS OTHERWISE NOTED
 - PERMANENT CONTROL POINT (P.C.P.)
 - ▲ INDICATOR OF ZERO LOT SIDE
 - CENTERLINE
 - A ARC LENGTH
 - D DELTA (CENTRAL ANGLE)
 - D.E. DRAINAGE EASEMENT
 - L.A.E. LIMITED ACCESS EASEMENT
 - L.M.A.E. LAKE MAINTENANCE ACCESS EASEMENT
 - L.M.E. LAKE MAINTENANCE EASEMENT
 - L.S.E. LIFT STATION EASEMENT
 - L.W.D. LAKE WORTH DRAINAGE DISTRICT
 - N.R. NON-RADIAL
 - O.R.B. OFFICIAL RECORDS BOOK
 - PG. PAGE
 - P.B. PLAT BOOK
 - P.B.C.R. PALM BEACH COUNTY RECORDS
 - P.O.B. POINT OF BEGINNING
 - P.O.C. POINT OF COMMENCEMENT
 - P.U.D. PLANNED UNIT DEVELOPMENT
 - R. RADIUS
 - R.E.E. ROOF ENCROACHMENT EASEMENT
 - R/W RIGHT-OF-WAY
 - SF. SQUARE FEET
 - U.E. UTILITY EASEMENT
 - CH. CHORD
 - C.B. CHORD BEARING



FILE: r:\990616\woodd\16pp7.dgn
 DATE: 19-Jun-01 13:32